



Astro C2

Quick Guide

V2.0

Foreword

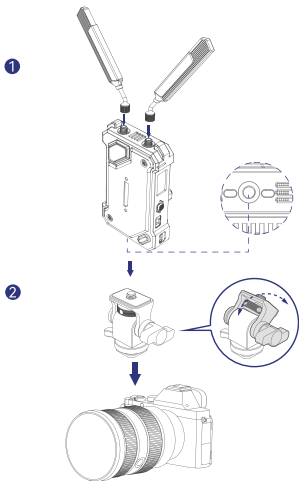
Thank you for choosing the **Astro C2** wireless high-definition video transmission system. The product adopts the newly developed ARGUS wireless transmission technology, achieving a seamless frequency hopping and ultra-low latency video transmission.



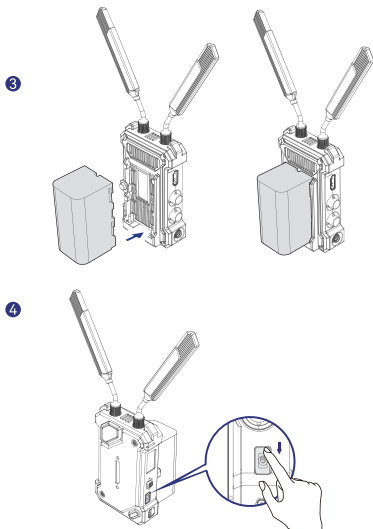
Scan the QR code to get more
details of the User Manual

Product Installation

Transmitter



1. Install the antennas as shown in the diagram.
2. Mount the transmitter to the camera using the magic arm, rotatable cold shoe mount or other accessories.

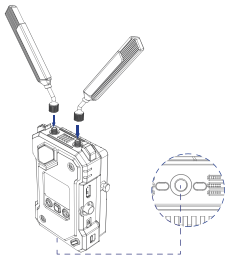


3. Install the battery (Support NP-F batteries or DC power adapter)
4. Toggle the power switch downward to turn on the transmitter.

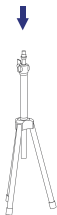
Product Installation

Receiver

1

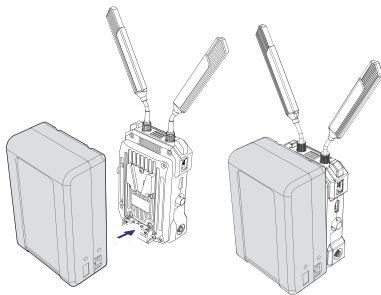


2

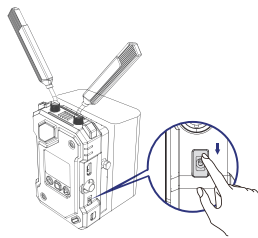


1. Install the antennas as shown in the diagram
2. Mount the receiver on the tripod using the 1/4 screw hole or 3/8 screw hole at the bottom.

3



4



3. Install the battery (Support V-Mount battery or DC power adapter).
4. Toggle the power switch downward to turn on the receiver.

Specifications

	Transmitter	Receiver
Port	DC Input: 2.0mm Core Socket HDMI Input: HDMI 1.4b SDI Input: 3G SDI SDI Loopout: 3G SDI USB-C: USB 2.0 OTG Antenna: SMA Male	DC Input: 2.0mm Core Socket HDMI Output: HDMI 1.4b × 2 SDI Output: 3G SDI × 2 USB-C: USB 2.0 OTG Antenna: SMA Male Ethernet Port: RJ45, 100 Mbps
Power Supply	NP-F Battery Voltage Range: 6.8 – 8.4V DC Voltage Range: 6 – 16V	V-Mount Battery Voltage Range: 11.8 – 16.8V DC Voltage Range: 6 – 16V
Power Consumption	<10W	<11W
Net Weight	210g	440g
Dimensions (L × W × H)	114.8 × 69 × 35.5mm (4.5 × 2.7 × 1.4")	142 × 87.2 × 33.2mm (5.6 × 3.4 × 1.3")
Operating Frequency	5.15 – 5.85 GHz	
Transmit Power	< 23 dBm	/
Receiver Sensitivity	/	-90 dBm
Latency	≥ 33ms	
Bandwidth	40 MHz	

Video Format

HDMI Input	HDMI Output	SDI Output
720p50/59.94/60	720p50/59.94/60	720p50/59.94/60
1080i50/59.94/60	1080i50/59.94/60	1080i50/59.94/60
1080p23.98/24/25/29.97/30	1080p23.98/24/25/29.97/30	1080p23.98/24/25/29.97/30
1080p50/59.94/60	1080p50/59.94/60	1080p50/59.94/60

SDI Input	HDMI Output	SDI Loopout /Output
720p50/59.94/60	720p50/59.94/60	720p50/59.94/60
1080i50/59.94/60	1080i50/59.94/60	1080i50/59.94/60
1080p23.98/24/25/29.97/30	1080p23.98/24/25/29.97/30	1080p23.98/24/25/29.97/30
1080p50/59.94/60	1080p50/59.94/60	1080p50/59.94/60

Note: Due to differences in various countries and regions, there may be variations in the operating frequency band and wireless transmit power of the product. For details, please refer to local laws and regulations.

Support

If you encounter any problems in using the product or need any help, please contact Eagleshero Support Team via the following ways:



Statement:

All copyrights belong to SHENZHEN XIANGYING TECHNOLOGY CO.,LTD. Without the written approval of SHENZHEN XIANGYING TECHNOLOGY CO.,LTD., no organization or individual may copy or reproduce part or all of any written or illustrative content and disseminate it in any form.

Trademark Statement:

All the trademarks are owned by SHENZHEN XIANGYING TECHNOLOGY CO.,LTD.

Note:

Due to product version upgrades or other reasons, this Quick Guide will be updated from time to time. Unless otherwise agreed, this document is provided as a guide for use only. All representations, information, and recommendations in this document do not constitute warranties of any kind, express or implied.



MADE IN CHINA

Manufacturer: SHENZHEN XIANGYING TECHNOLOGY CO., LTD.

Address: The first and second floors of Zhongyuntai Technology Industrial Plant in Tangtou Community, Shiyan Street, Bao'an District, Shenzhen, 518108, China

P/N : 3003080699